

DISTRICT  
**WHARF**

where DC meets to make

**memories**



# Come Together in Style

From lively outdoor areas to modern rooms with exquisite river views, The Wharf plays host to DC's most exciting event venues. Summer gatherings and intimate parties alike become memorable events, nestled between spectacular restaurants and one-of-a-kind waterfront experiences. Whether you're looking to offer your guests the unforgettable or just provide them with a conveniently located place to gather, The Wharf has the perfect space for any occasions or events, including:

- / Corporate gatherings
- / Product launches
- / Charity galas
- / Networking
- / Concerts
- / Graduations
- / Food & wine events
- / Outdoor events
- / Weddings

# It's All Here

The Wharf is more than just a place to meet. It's an opportunity to explore the best that DC has to offer!



dozens

of exciting new  
restaurants

1

mile of  
waterfront

5

Metro lines and  
a VRE station  
within easy  
walking distance

one-of-  
a-kind

boutiques and  
national brand  
retailers

3/4

mile from  
National Mall



1

water shuttle  
to East  
Potomac Park



4

public-use  
piers

690

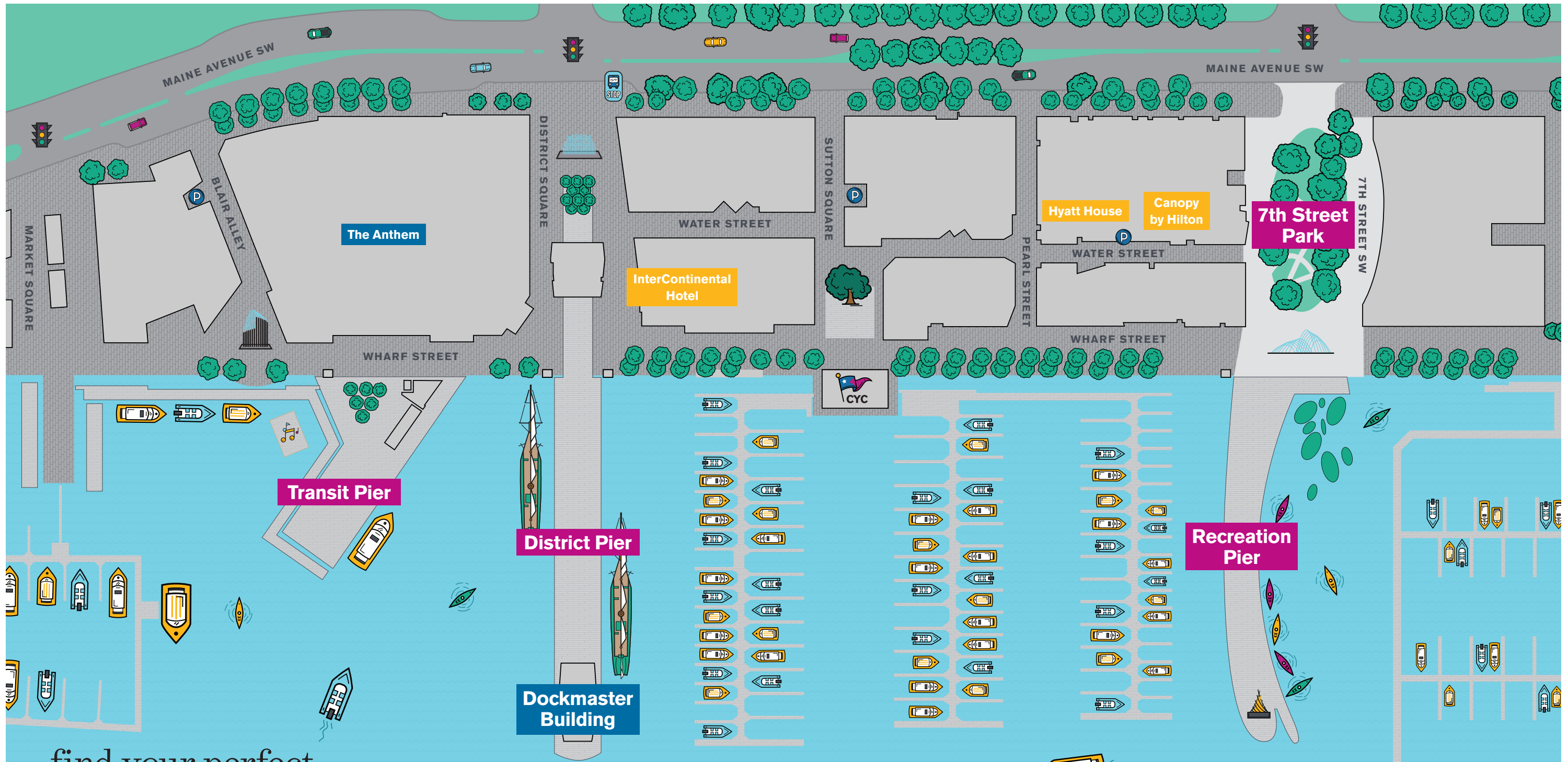
rooms in  
three hotels

(Canopy by Hilton,  
InterContinental Hotel,  
Hyatt House)

water  
taxi  
service

to Georgetown,  
Old Town  
Alexandria,  
and National  
Harbor

plenty  
of parking



find your perfect  
**spot**

■ PRIVATE VENUES ■ RENTABLE OUTDOOR SPACES ■ HOTELS

# Dockmaster Building

With exquisite views of the Washington Channel, cherry blossom trees, and more, the Dockmaster Building is as intimate as it is immaculate. Resting at the end of the 450-foot District Pier, this space offers guests the perfect mix of excitement, access, and exclusivity.

## THE FACTS

### INDOOR/OUTDOOR

1,500 square feet of rentable space

### CONTACT

privateevents@wharfdc.com

Two-story glass building

### CAPACITY

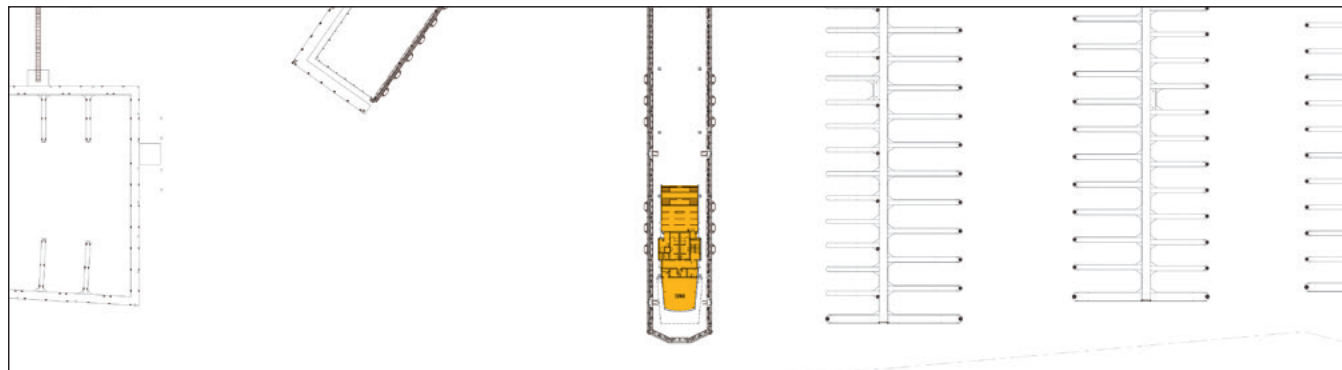
140 standing

100 seated

First-floor conference room with direct access to waterfront overlook

Second-floor Dockmaster Room features wrap-around balcony and canopy overhang, as well as floor-to-ceiling windows

Surrounded by water for 270-degree river views



# District Pier

Reaching hundreds of feet into the Washington Channel, District Pier is one of The Wharf's central outdoor gathering places, playing host to exciting regional festivals, international celebrations, and whimsical holiday happenings.

## THE FACTS

### **OUTDOOR**

8,000 square feet of rentable outdoor space

### **CONTACT**

[privateevents@wharfdc.com](mailto:privateevents@wharfdc.com)

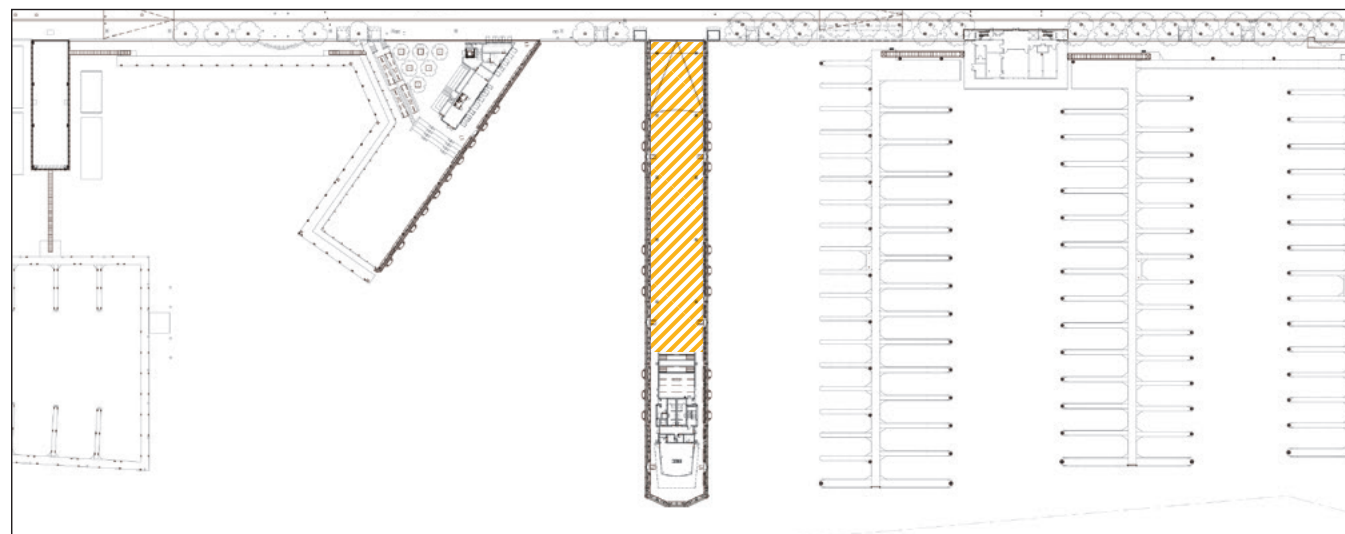
Extends 450 feet into the Washington Channel

### **CAPACITY**

800 standing

Entire pier (or portion thereof) can be reserved for private events

Private event space has electricity, Wi-Fi availability, and accommodates tenting



# Transit Pier

Bustling with energy, the Transit Pier allows visitors to feel a part of the waterfront action at The Wharf. Perfect for celebrations and for lovers of the outdoors, this space offers water views on three sides and is great for soaking up all the area has to offer.

## THE FACTS

### ☀️ OUTDOOR

7,000 square feet of rentable outdoor space, can accommodate tenting

### ✉️ CONTACT

[privateevents@wharfdc.com](mailto:privateevents@wharfdc.com)

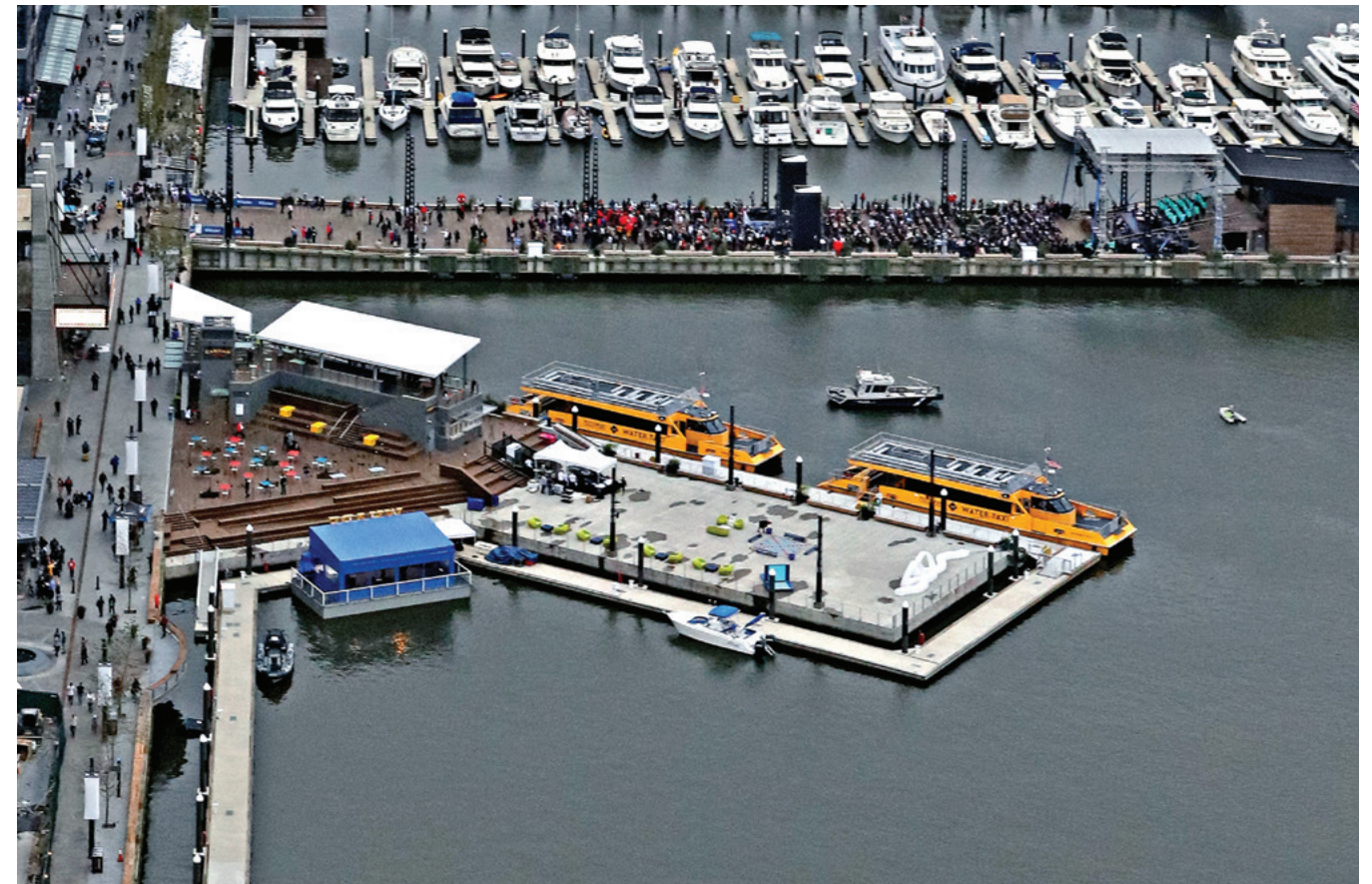
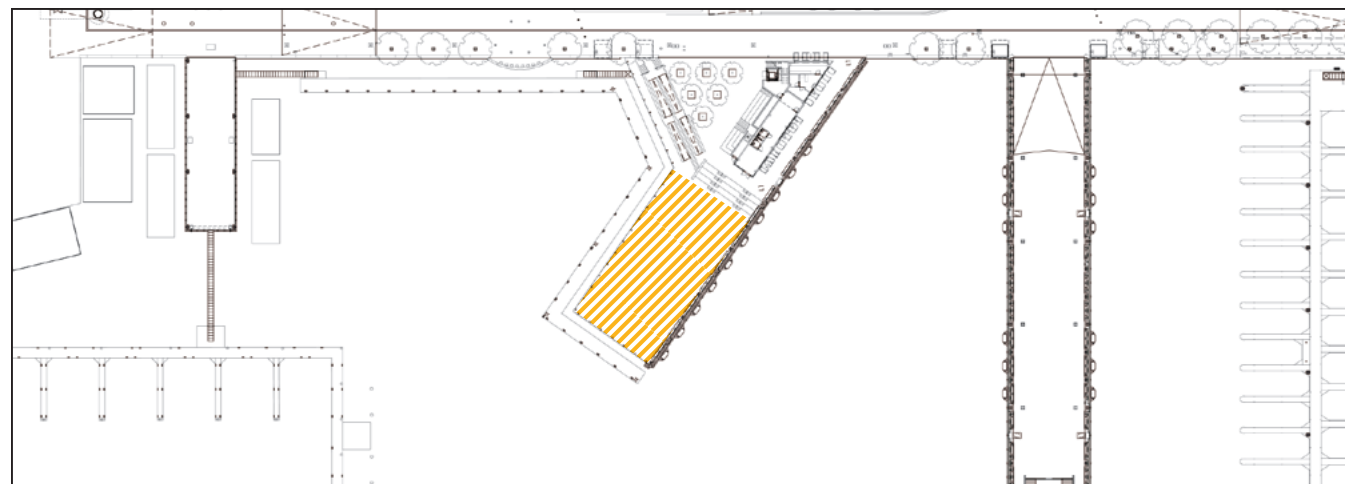
Easy access to water taxi, The Anthem, Wharf Floating Stage, and Cantina Bambina

### 👤 CAPACITY

700 standing

High-energy area, filled with activity

Seasonal ice-skating rink can be reserved for private events



# 7th Street Park

The Wharf's largest naturally shaded space, 7th Street Park draws on both the energy of The Wharf and the serenity of the water. Situated as the area's village green, 7th Street Park offers your guests room to move and beautiful views of the Recreation Pier.

## THE FACTS

### **OUTDOOR**

10,000 square feet of rentable outdoor space

### **CONTACT**

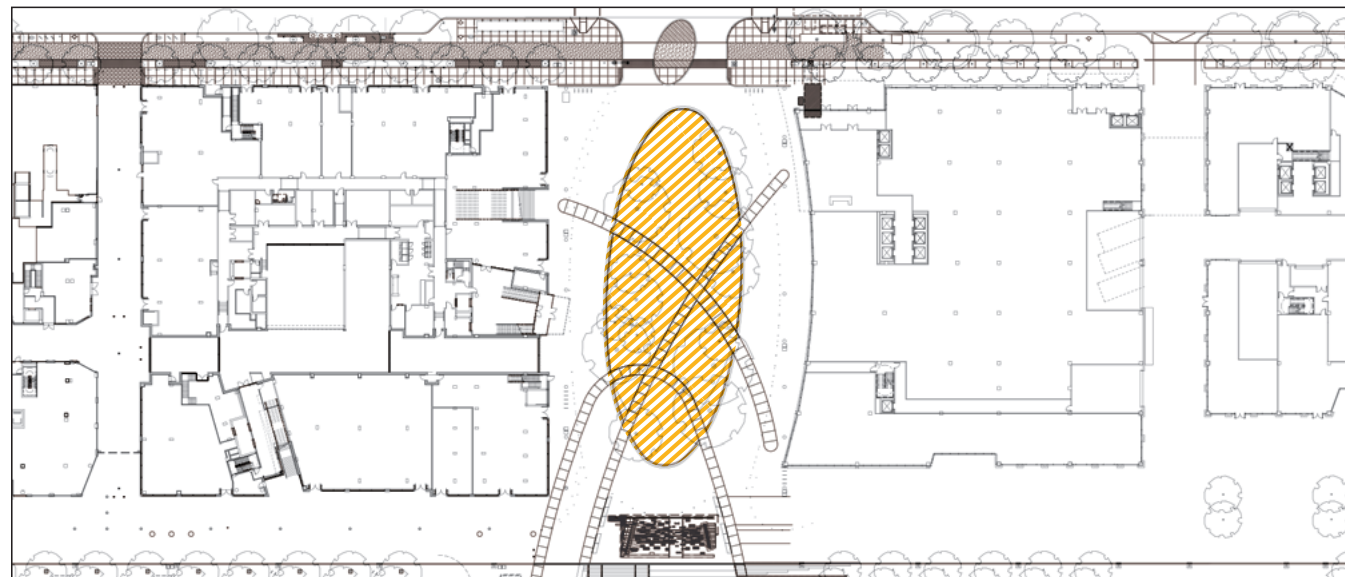
privateevents@wharfdc.com

Water views

### **CAPACITY**

150 standing

Adjacent to activities on Recreation Pier





# Recreation Pier

Extending gracefully from 7th Street Park, Recreation Pier is the place for events with direct access to the water. Here, your guests can go kayaking or paddleboarding, dangle their feet into the water or sit by a roaring fire pit, and enjoy a playful moment on the swings that dot the pier.

## THE FACTS

### ☀️ OUTDOOR

Extends 400 feet into the Washington Channel

### ✉️ CONTACT

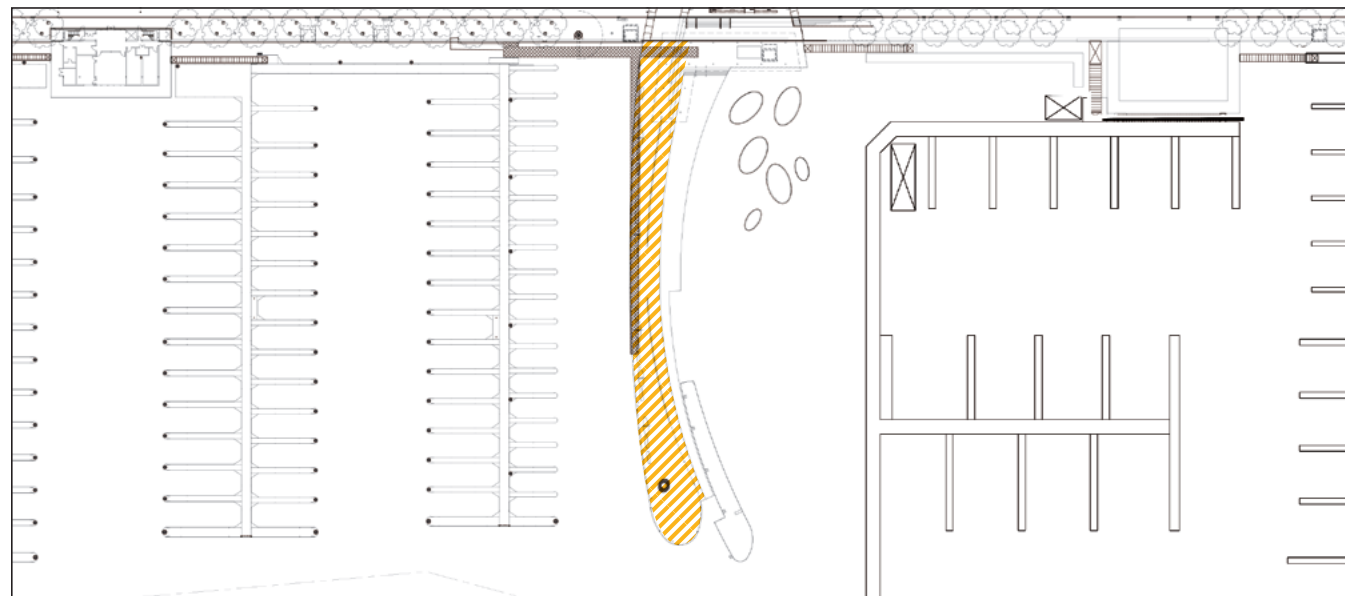
privateevents@wharfdc.com

Perfect for outdoor gatherings

### 👤 CAPACITY

500 standing

Direct views of the water, the Capital Yacht Club, and the Gangplank Marina



# Canopy by Hilton

Canopy Washington, DC | The Wharf is an exciting signature lifestyle hotel that offers an artisanal take on events in this neighborhood. With sweeping views of the Potomac and an inviting local feel, this space offers your guests an authentic taste of DC's exciting cultural renaissance.

## THE FACTS

### INDOOR/OUTDOOR

175 guest rooms

### CONTACT

Ryan Zelden  
ryan.zelden@hilton.com  
202.730.2365

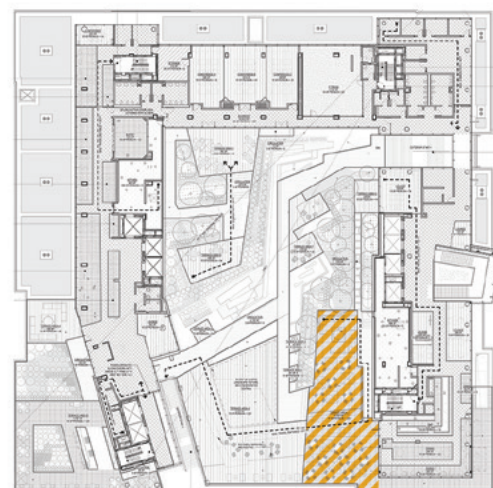
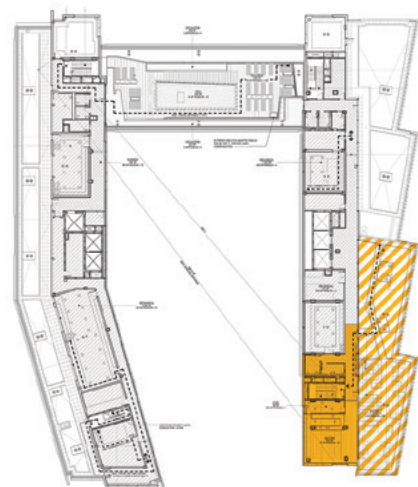
10th-floor rooftop lounge that features 700 square feet of indoor space (including bar area and seating) and 1,300 square feet of outdoor seating space

### CAPACITY

110 in large meeting room  
14 in small meeting room  
85 on interior terrace  
160 on waterside terrace

3,300-square-foot outdoor terrace space adjacent to Canopy Central bar

Potomac River views



# Hyatt House

Upscale, casual, and residentially inspired, Hyatt House Washington, DC / The Wharf offers guests the comforts of home. With multiple meeting rooms, lush amenities, an on-site restaurant, bar, market, and House Host, visitors have everything they need at their fingertips.

## THE FACTS

### INDOOR/OUTDOOR

237 guest rooms

### CONTACT

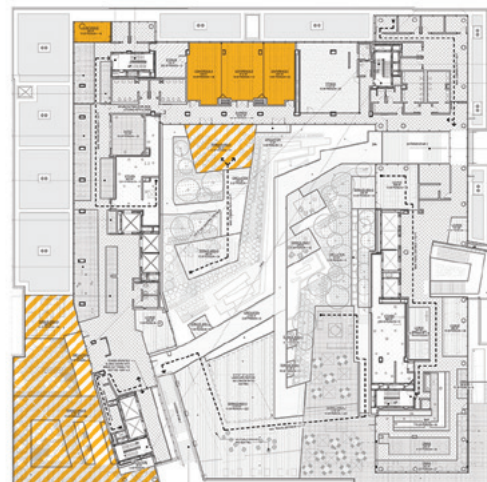
Cierra Pugh  
wasxs-rfp@hyatt.com  
202.991.0804

Two meeting rooms on the second floor, including a 1,650-square-foot room that is dividable into three separate spaces, and a 200-square-foot room facing Maine Avenue

### CAPACITY

110 in large meeting room  
14 in small meeting room  
85 on interior terrace  
160 on waterside terrace

Two distinct outdoor areas on the second-floor terrace: 1,200 square feet of interior terrace space and 2,200 square feet of waterside terrace space with grills



# InterContinental

Contemporary and sophisticated, InterContinental Washington, DC – The Wharf boasts luxury and natural light in abundance, featuring a variety of grand meeting spaces, water views, impeccable services, and exclusive access points.

## THE FACTS

### INDOOR/OUTDOOR

278 luxury rooms

### CONTACT

wharfdcsales@ihg.com

2,300-square-foot penthouse Algonquian Ballroom with water views

### CAPACITY

335 in Algonquian Ballroom  
Up to 750 in Waterside Ballroom  
25-165 in meeting rooms  
(for a total of more than 500)

5,300-square-foot Waterside Ballroom on second floor with water views

Ten flexible meeting and event spaces



# The Anthem

Combining beautiful architecture with sweeping spaces, The Anthem provides an innovative, multi-functional venue that's unrivaled in all of DC. The ideal venue for concerts, conferences, and other gatherings, The Anthem offers the perfect fit for your event.

## THE FACTS

### 🏠 INDOOR

### ✉️ CONTACT

Dori Armor  
202.888.0020  
dori@930.com

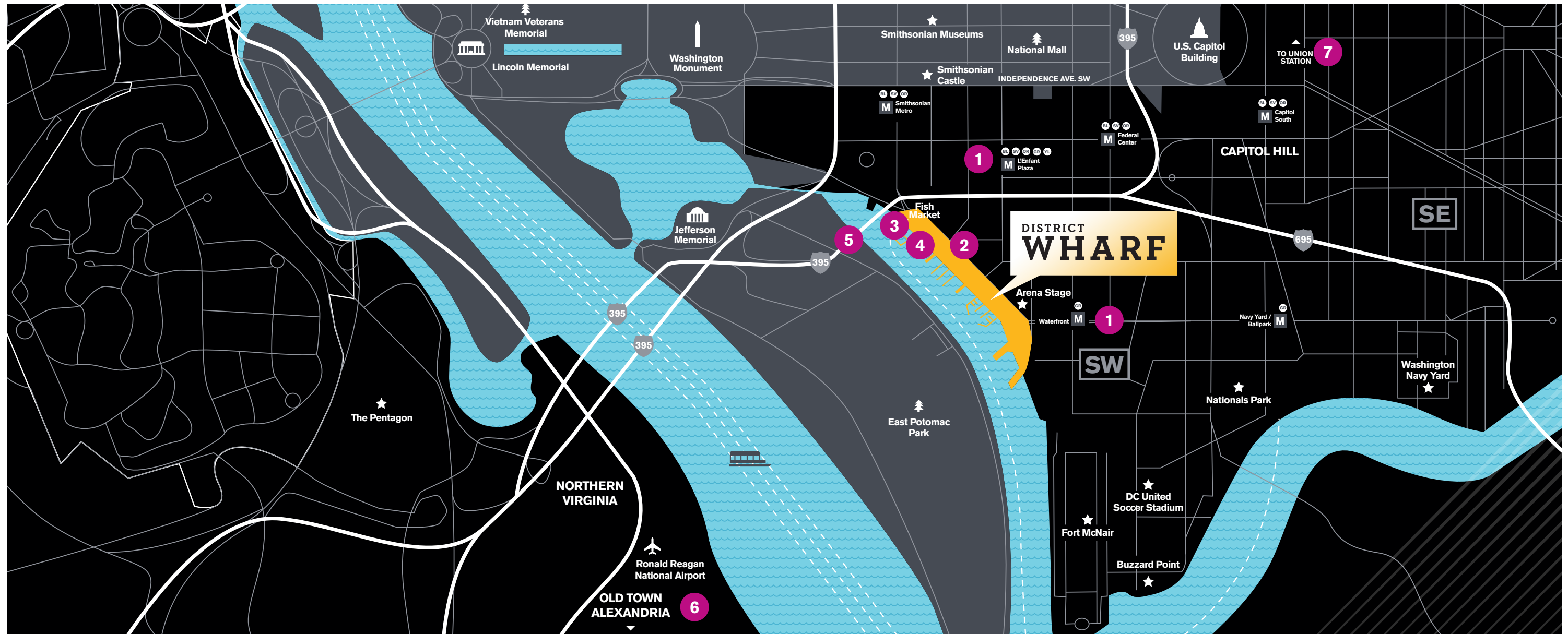
24,000-square-foot floor plate

2,700-square-foot lobby on first floor

19,000 square feet on second and third floors

Suitable for conferences, lectures, seminars,  
and galas



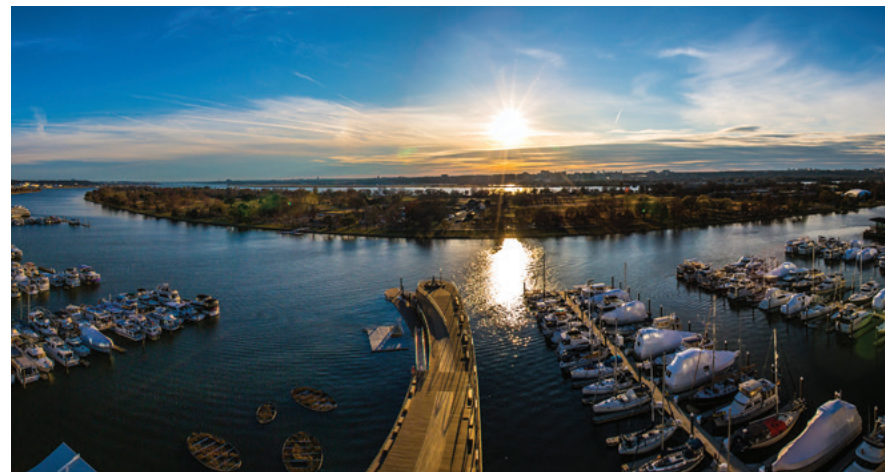
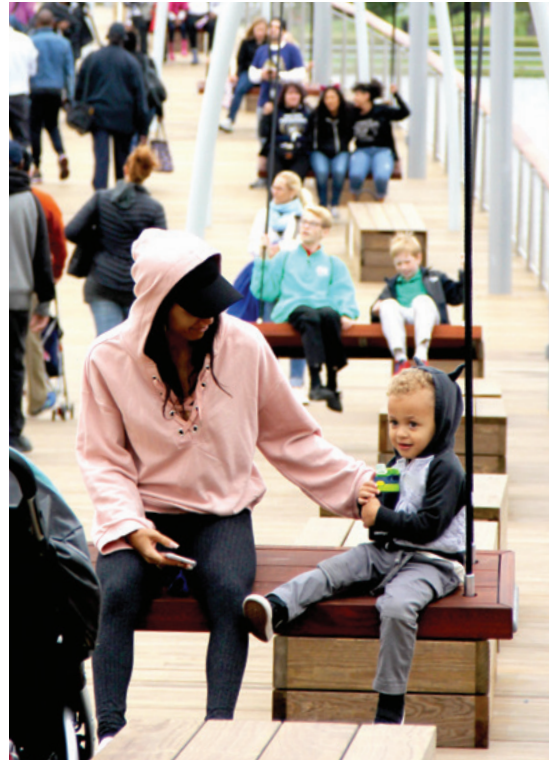


# Getting Here

Centrally located, The Wharf is Washington, DC's waterfront destination that is easy to get to—and to get around. It is reachable through all imaginable modes of transportation, from car and public transportation to bike and boat, and offers plenty of parking.

- 1 Walk to two Metro stations (Waterfront for the Green line and L'Enfant Plaza for the Blue, Orange, Silver, Yellow, and Green lines, plus VRE)
- 2 Ride your bike or rent one from four Capital Bikeshare stations and enjoy easy access to DC's many bike lanes and the Riverwalk Trail System
- 3 Dock your boat in one of our Market Docks or the Gangplank Marina
- 4 Catch a water taxi to Georgetown, Old Town Alexandria, or National Harbor
- 5 Drive to The Wharf—we're just off 7th Street SW with direct access to the Southeast-Southwest Freeway and I-395
- 6 Fly into Reagan National Airport and get to The Wharf in only 10 minutes via car or Metro
- 7 Take Metro, bus, or car to Union Station for convenient Amtrak and MARC train connections

# top ten new experiences



Beyond amazing restaurants and views of the Potomac, The Wharf offers countless things to do and see—on and off the water.

- 1 Rent kayaks or paddleboards to explore the river
- 2 See a concert at The Anthem or a show at Arena Stage
- 3 Sail the Potomac or take a leisure cruise
- 4 Work out in our parks or join us for yoga at the waterfront
- 5 Hop on the jitney to East Potomac Park to swim or play golf or tennis
- 6 Enjoy year-round events, festivals, great bars, and live music
- 7 Catch the water taxi to get to destinations all along the river
- 8 Walk to monuments and Smithsonian museums on the National Mall
- 9 Cheer on your baseball team at Nationals Park
- 10 You can walk to the new International Spy Museum and also to Audi Field—DC United's new soccer stadium at Buzzard Point

where DC meets its

# water







DISTRICT  
**WHARF**  
[wharfdc.com](http://wharfdc.com)